

**Copyright © 1993 - 2009, Secrett Systems**

## **Australian Edition**

## **Installation Guide**

### **EziMenu Version 2.5, Australian Edition**

#### **Overview**

EziMenu has been designed to make using your computer as simple as possible.

It is not aimed at advanced users. Rather it is aimed at novice computer users who may (for example) be elderly or somewhat intimidated by the Start menu.

If you want to do more than write a letter, surf the 'net, send some email or play Solitaire, Spider or Minesweeper, then this program is definitely not for you.

#### **Shareware**

The program is shareware which means that you can use it for a limited amount of time (30 days).

After that time you must either pay for it or uninstall it. Paying for the software is simple. Please use the enclosed order form.

During the evaluation period, a label will be displayed at the top of the screen telling you how many days evaluation you have left.

When the evaluation period expires, the program will not run except to allow you to display the registration dialog to enter your registration code after purchase.

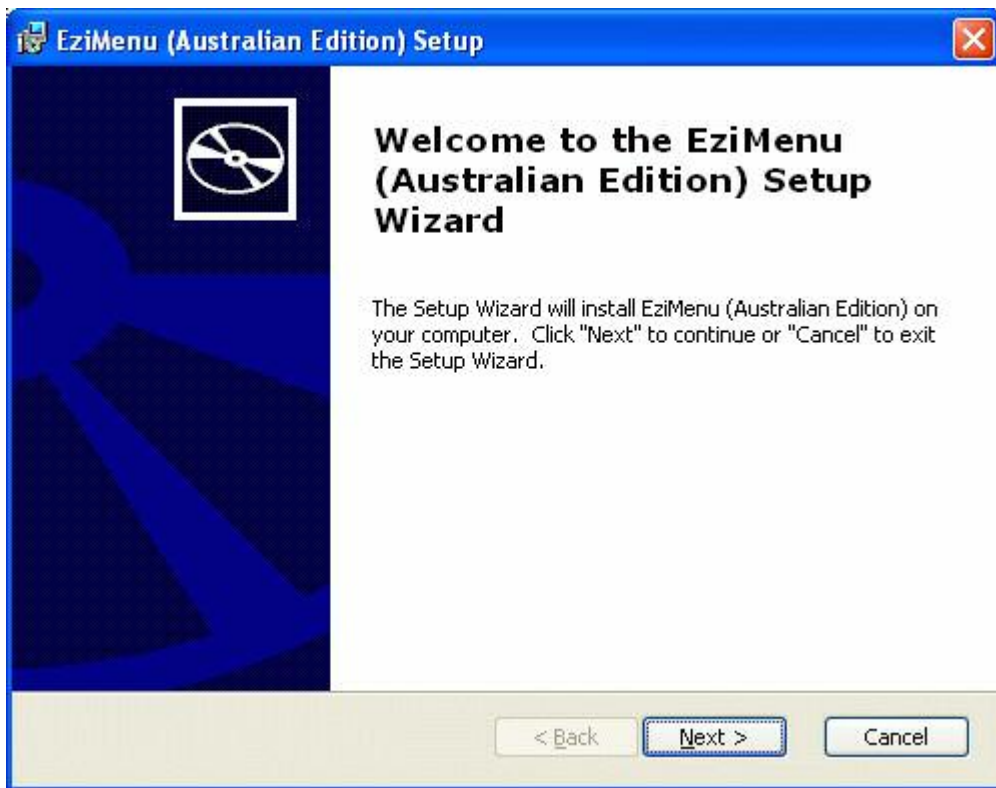
#### **Target Operating Systems**

This program has been extensively tested on Windows 95, Windows 98, Windows ME Windows 2000, Windows XP (Home and Professional editions) and Windows Vista.

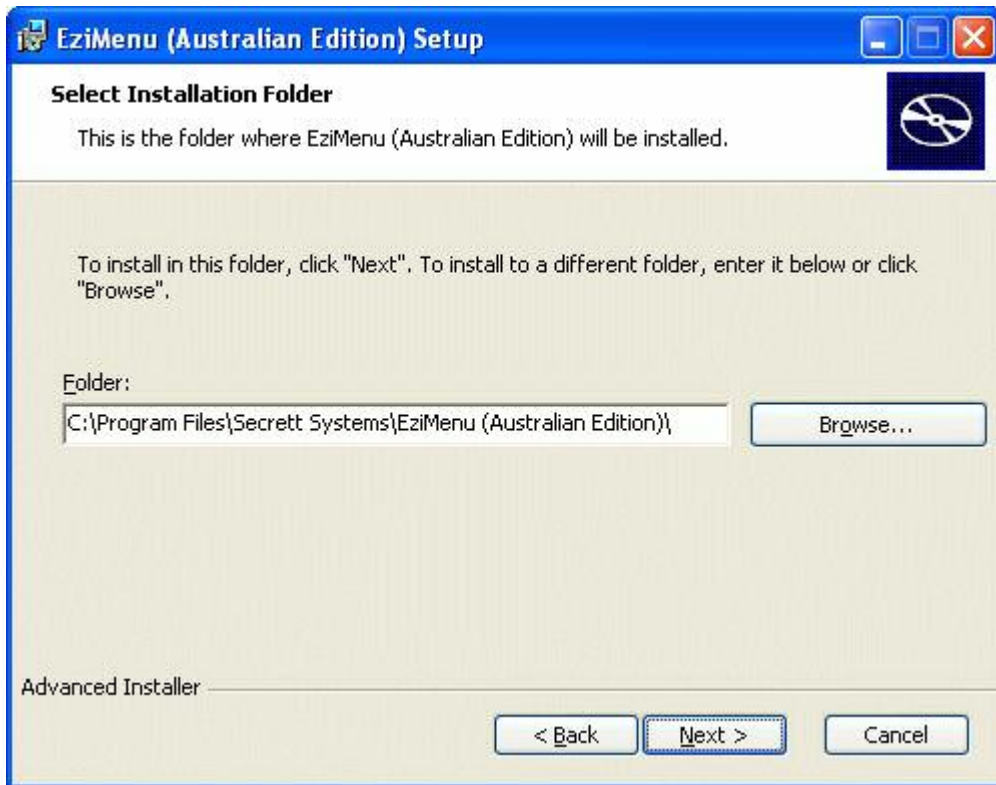
All features are fully functional on these Microsoft operating systems.

## Installation

Installation is simple. Double click on the file ezimenu.msi. You should see a screen the one below:

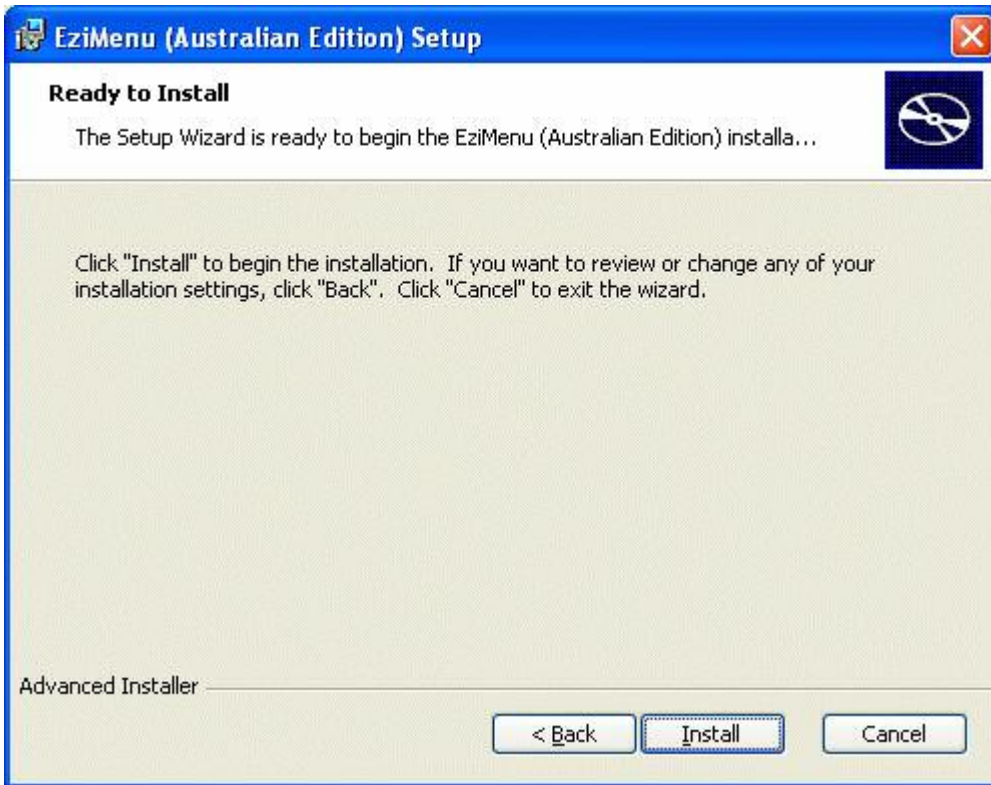


Click 'Next'. The program folder dialog is displayed.

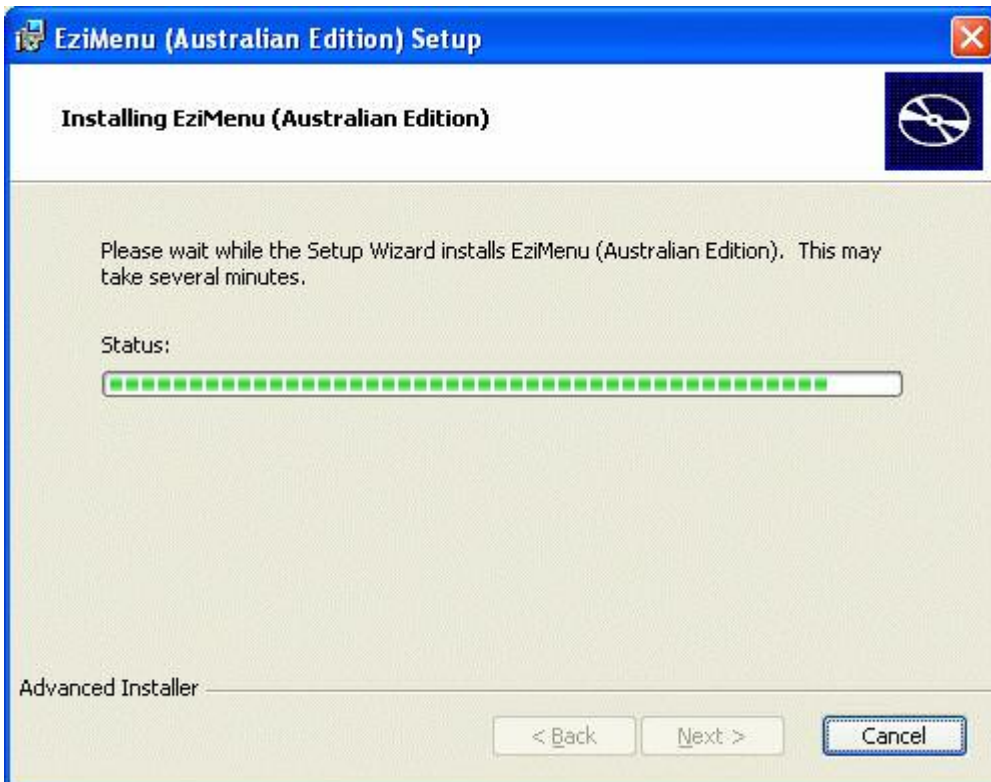


If you wish, you can change the location where the files are to be stored. (Not recommended except for experienced users).

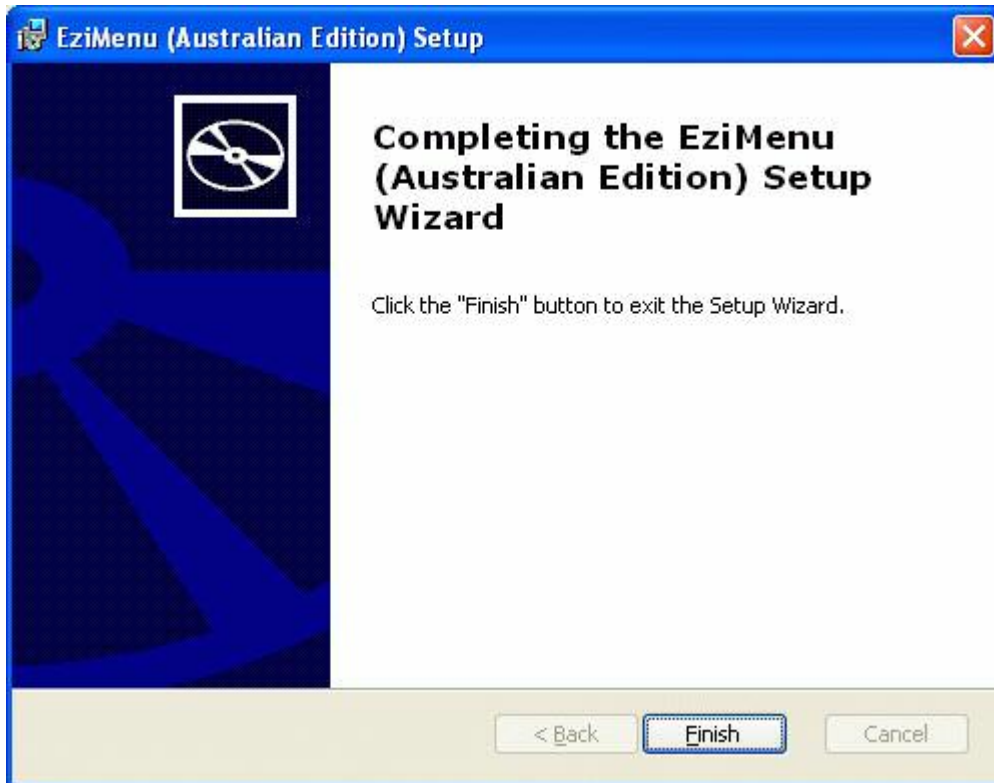
Click 'Next':



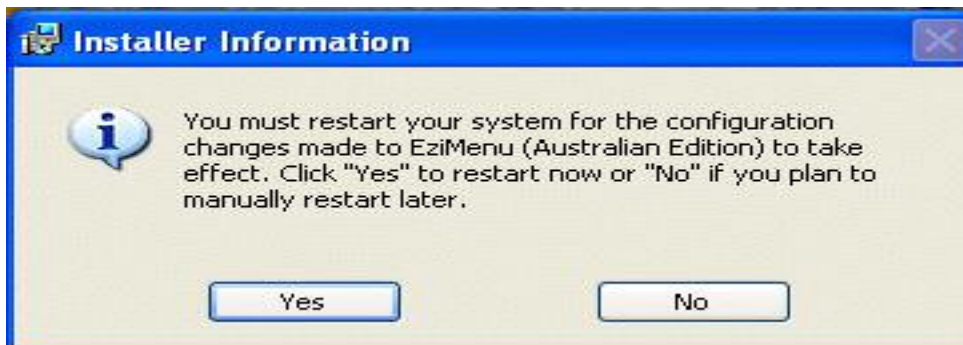
Click 'Install'. Installation will now commence. As installation progresses, a dialog showing progress will be displayed.



Once installation is complete, the following dialog is displayed.



Click 'Finish'. At this point the machine must be rebooted to complete the installation. The following dialog will be displayed.



Click 'Yes' to reboot immediately or 'No' if you plan to reboot later.

If you click 'Yes', your PC will reboot and the program will run automatically after it has restarted.

## Contact Us

Secrett Systems can be contacted at any time for support, product advice, bulk pricing etc. as follows:

Mail: Secrett Systems  
8 Lido Court  
Para Hills  
South Australia 5096

ABN: 22 307 891 173

Phone: +61 416 113 513

Email: [help@secrett-systems.com](mailto:help@secrett-systems.com)  
[sales@secrett-systems.com](mailto:sales@secrett-systems.com)

Web: <http://www.secrett-systems.com>

Product Information: <http://www.secrett-systems.com/products.htm>

**You Can Access the EziMenu USER MANUAL on the main menu screen!**